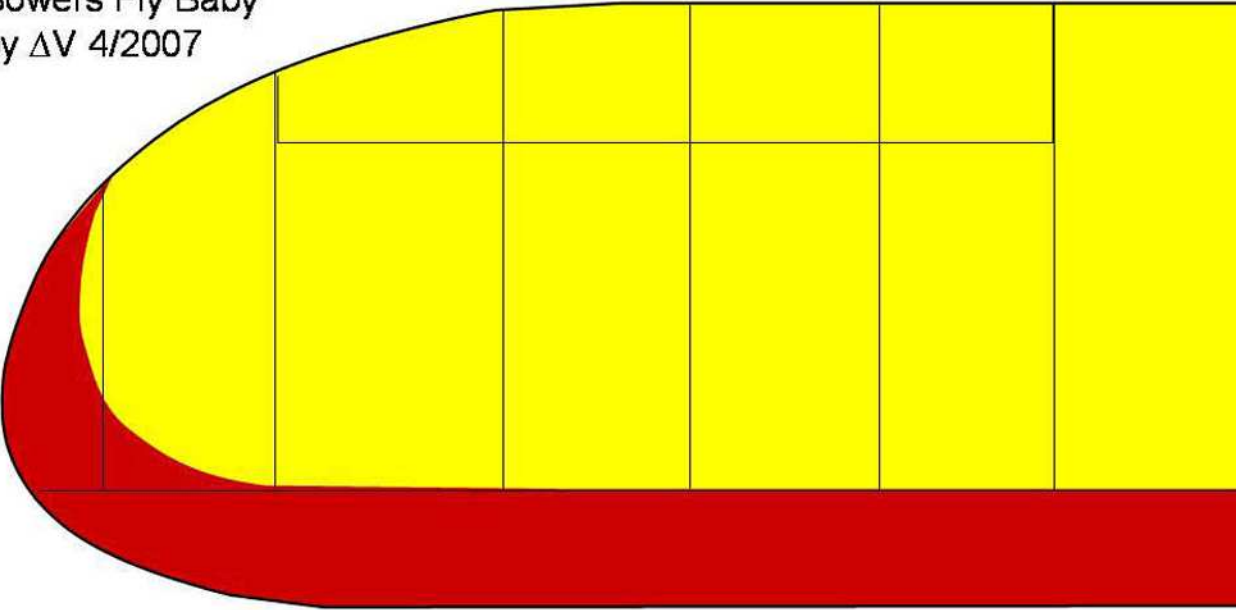
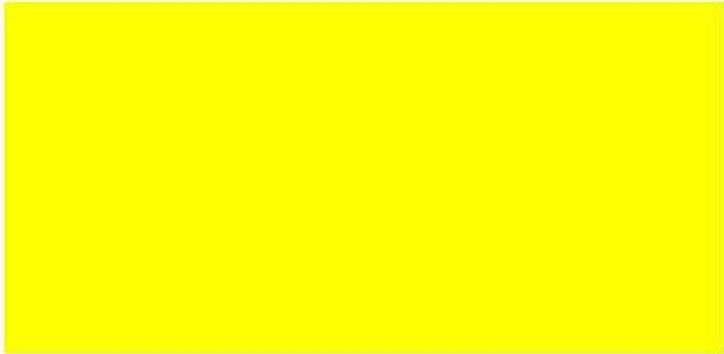


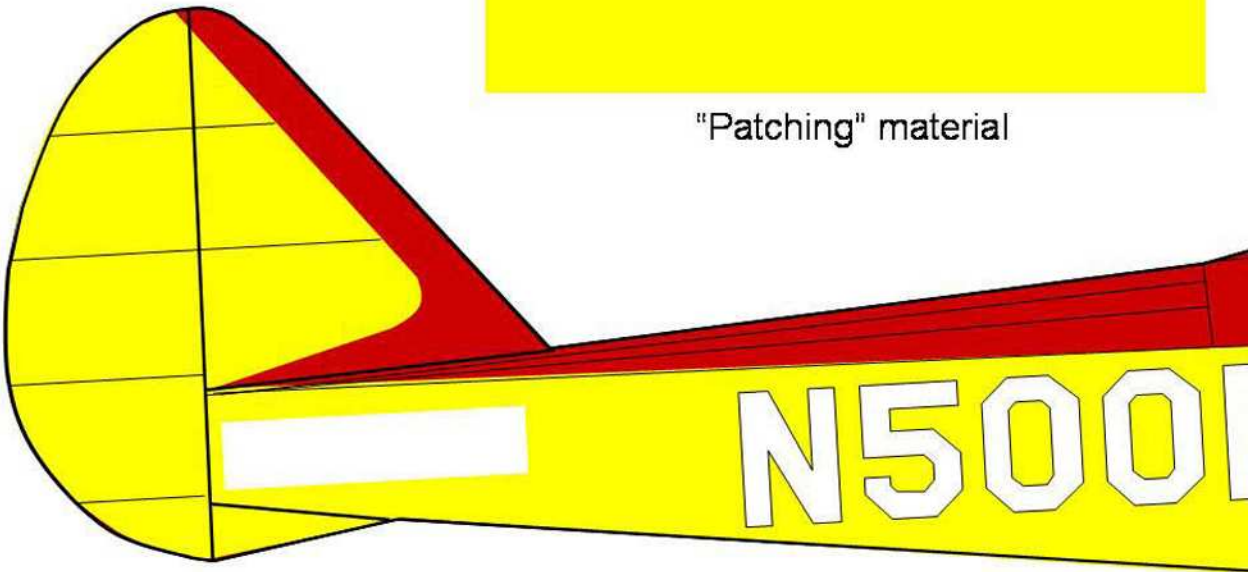
Bowers Fly Baby
by ΔV 4/2007



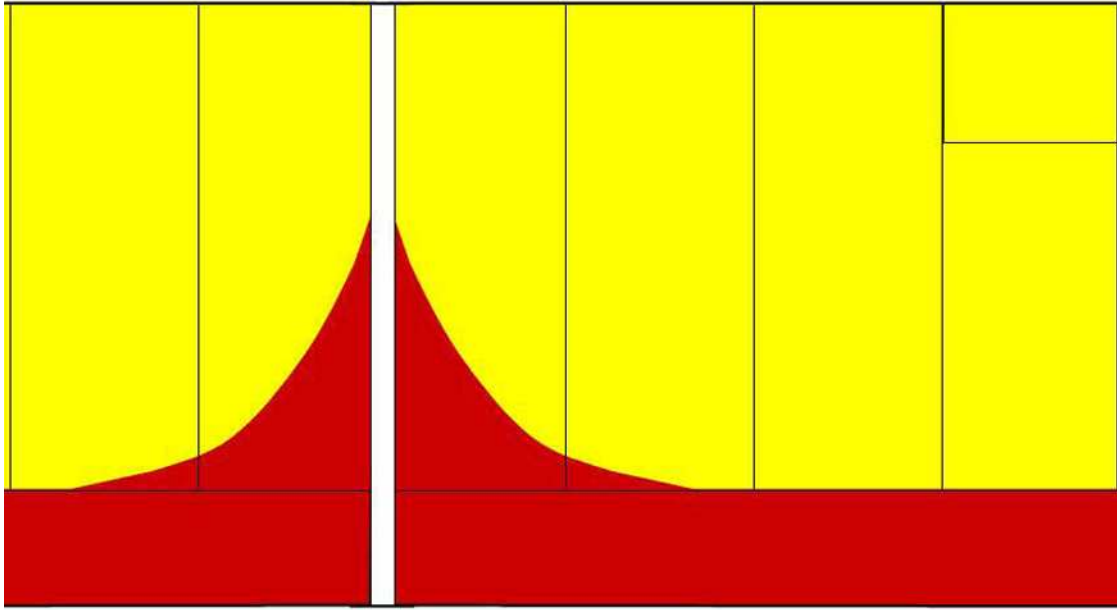
- Printer in "Banner" mode
- Print on two pieces of clear label butted together and taped on non-printing side



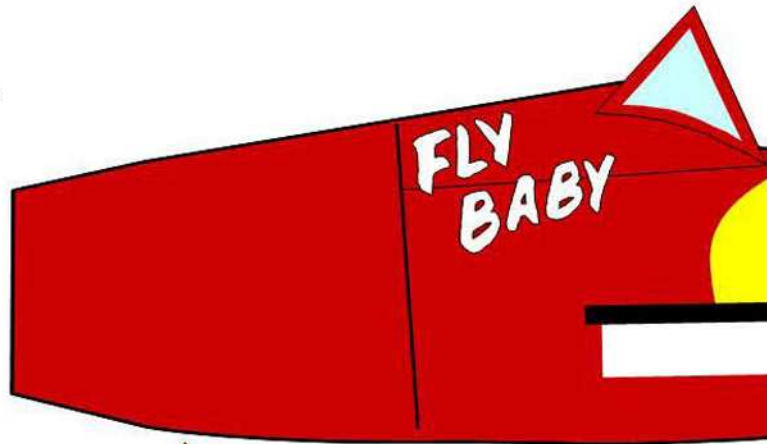
"Patching" material

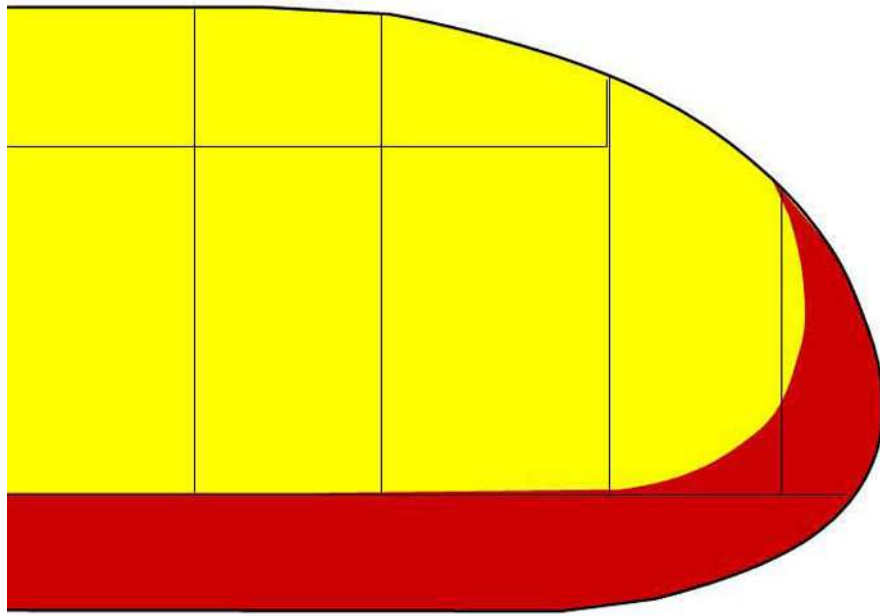


Right Fuselage



Cut nose to shape
after assembly to
match Sky Force
spinner/keel
protector





1

2

3

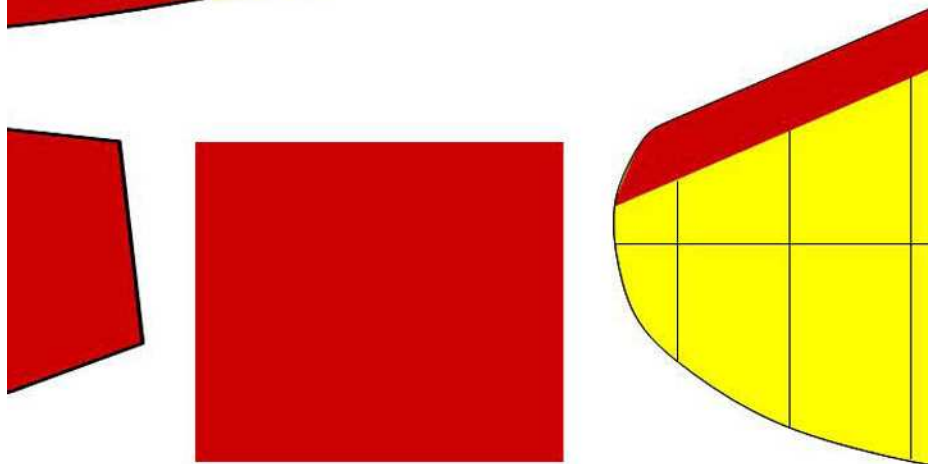
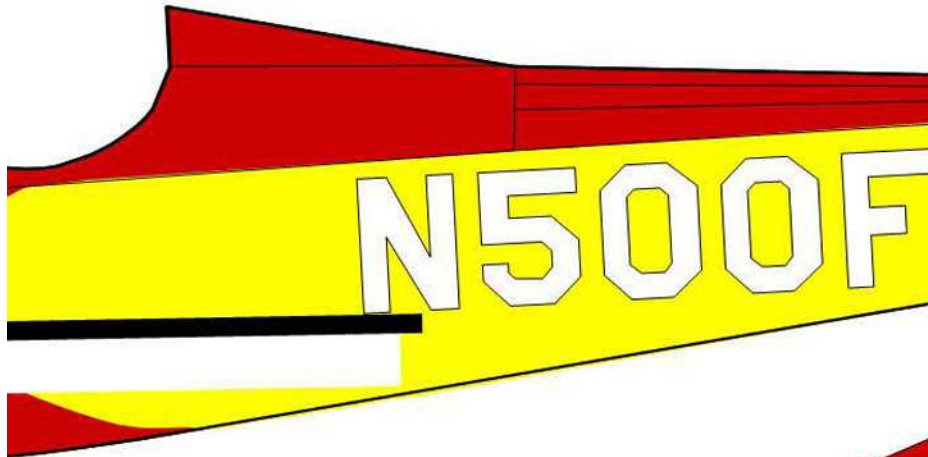
4

5

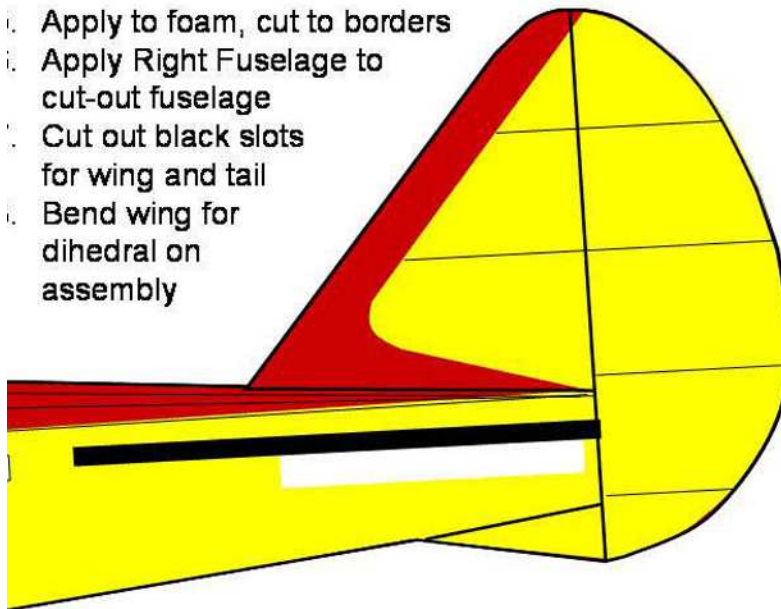
6

7

8



- 1. Cut out the white areas under the wing and tail attach points on the fuselages, and the gaps between the wing and tail panels (to expose foam for gluing during assembly)
- 2. Cut out Left Fuselage with slight margin around borders, Right Fuselage tight to borders
- 3. Cut out the wing as a single piece, taking care to leave spare material around the cut-out gap
- 4. Ditto the tail
- 5. Apply to foam, cut to borders
- 6. Apply Right Fuselage to cut-out fuselage
- 7. Cut out black slots for wing and tail
- 8. Bend wing for dihedral on assembly



Left Fuselage

